



GAT MONTHLY MEMBERSHIP PROGRESS REPORT

Results as of: 9/30/2021

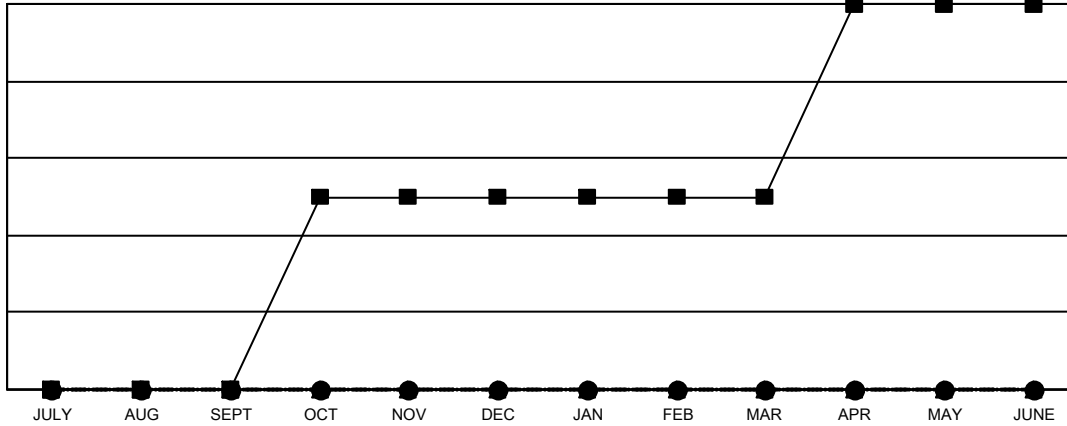
Multiple District 43

LOCATION: KENTUCKY

Clubs			
RESULTS FOR 2021-2022			
QUARTER	NEW CLUB GOAL	NEW CLUBS	DROPPED CLUBS
JULY/AUG/SEPT	0	0	1
OCT/NOV/DEC	1	0	0
JAN/FEB/MAR	0	0	0
APR/MAY/JUNE	1	0	0

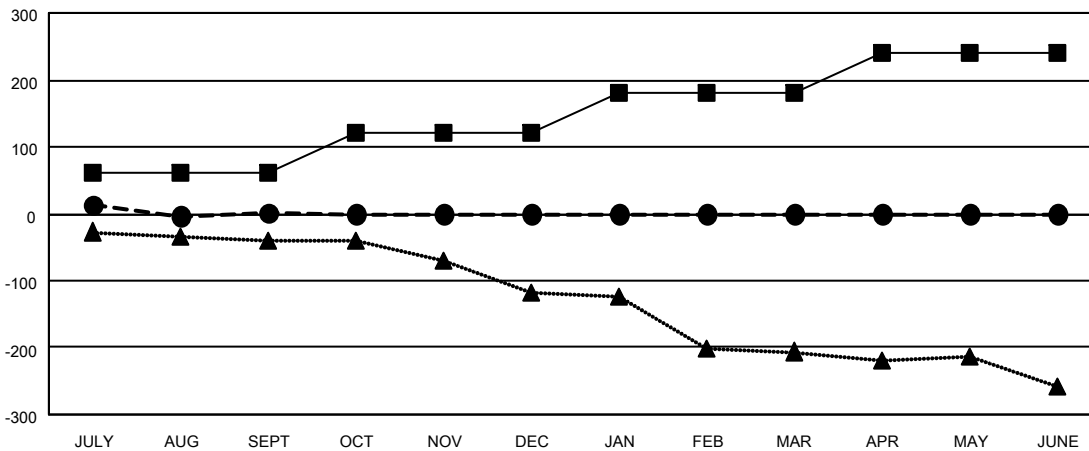
Members			
RESULTS FOR 2021-2022			
QUARTER	MEMBER GROWTH NET GOAL	MEMBER GROWTH ACTUAL	DROPPED MEMBERS ACTUAL (including transfers)
JULY/AUG/SEPT	60	115	104
OCT/NOV/DEC	60	0	0
JAN/FEB/MAR	60	0	0
APR/MAY/JUNE	60	0	0

GOALS AND ACTUAL NEW CLUBS CUMULATIVE



- CURRENT YEAR GOALS FOR NEW CLUBS
- CURRENT YEAR ACTUAL NEW CLUBS
- ▲- LAST YEAR ACTUAL NEW CLUBS

GOALS AND ACTUAL MEMBERS CUMULATIVE



- MEMBER GROWTH NET GOAL
- MEMBER GROWTH ACTUAL
- ▲- LAST YEAR MEMBERSHIP ACTUAL

DROPPED CLUBS: 1	42 CLUBS OF 153 ADDED 1 OR MORE NEW MEMBERS	GENDER DISTRIBUTION
DROPPED MEMBERS	CLICK HERE FOR CUMULATIVE MEMBERSHIP DATA	MALE 2,408 (65.65%)
DECEASED 17		FEMALE 1,260 (34.35%)
CLUB CANCELLED 20		NON BINARY 0 (0.00%)
OTHER 67		PREFER NOT TO ANSWER 0 (0.00%)
TOTAL 104		TOTAL FAMILY UNIT MEMBERS 723
		FAMILY MEMBERS PAYING HALF DUES 372